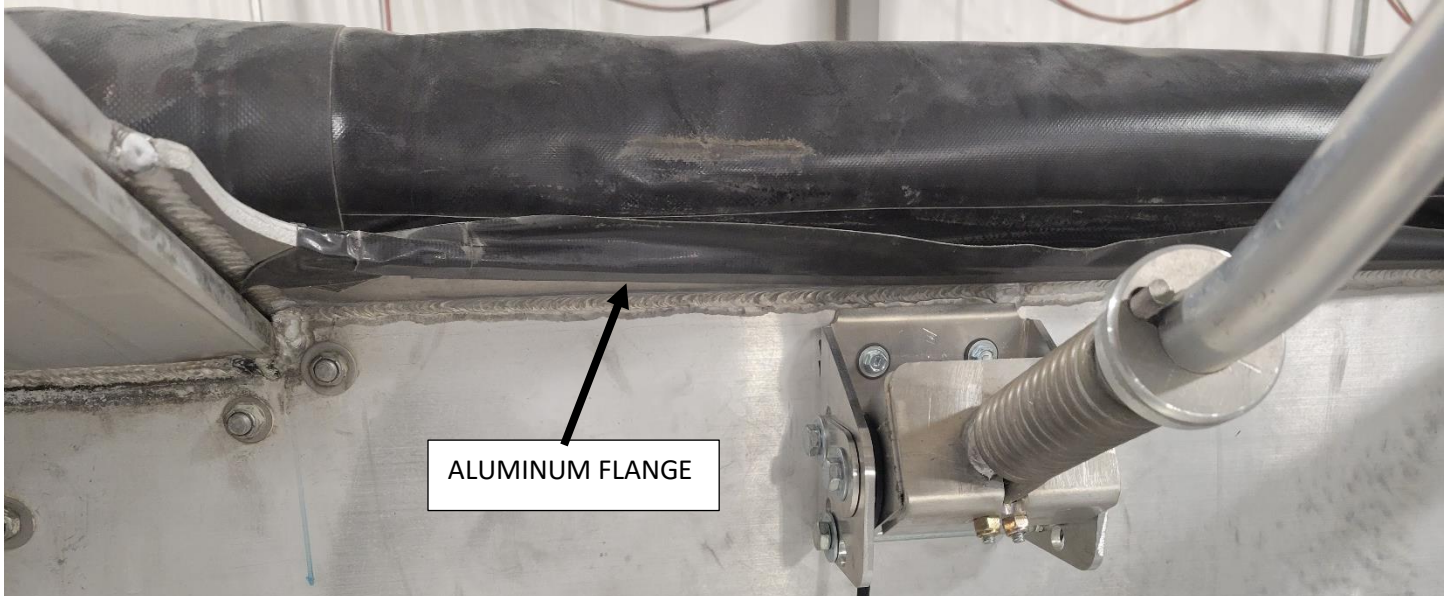


Titan Thin Wall Trailer Modification



Titan Thin Wall Trailers have hoods that are built into the trailer. There is an aluminum flange that comes off the hood and onto the sides of the trailer. Because of this flange, the mounting bracket for the camera arm needs to be modified in order to be mounted onto the Titan trailer.

Remove the top flange of the Camera Arm Mounting Base Plate. The base plate can now be installed onto the wall underneath the aluminum flange of the trailer. Since the trailer has a double wall, it is acceptable to secure the bracket through the inside wall of the trailer without affecting the outside wall.

There is a center brace that is bolted between the hoods and the first hoop. This is on both the front and rear of the trailer. This brace will need to be removed to install the Camera Arm.

Refer to the standard Camera Arm instruction for the rest of the installation procedures.

