

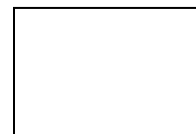
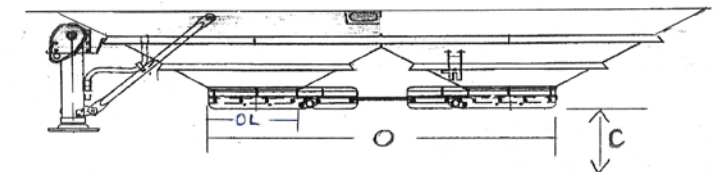


# Hopper Augers

## Lode King Order Form

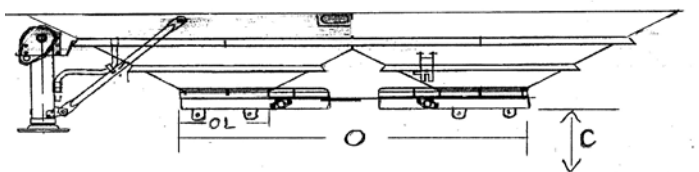
Customer Name: \_\_\_\_\_ Fax # ( ) \_\_\_\_\_  
 Address: \_\_\_\_\_ Phone # ( ) \_\_\_\_\_  
 Make of Trailer: \_\_\_\_\_ Year of Trailer \_\_\_\_\_  
 Length of Trailer: \_\_\_\_\_ Steel or Aluminum: \_\_\_\_\_ Serial # \_\_\_\_\_  
 Width of Trailer: 8' or 8'6"

**Note:** This style of chute is normally 20-1/2" up to the start of the pillow block and the Inside Width is normally 27-1/2"



OR

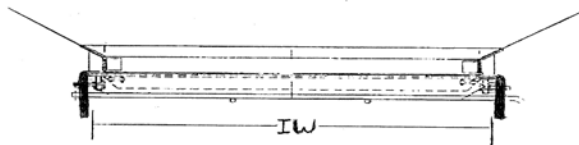
**Note:** This style of chute is normally 19-1/2" up to the start of the pillow block and the Inside Width is normally 28-1/2"



**Difference is one style has 2 tabs for the safety grate and the other has 2 holes in a plate hanging down for the safety grate.**

Please give exact measurements to the nearest 1/16" of an inch

- Bottom of Hopper to the ground (C): \_\_\_\_\_
- Front of Hopper to Rear of Rear Hopper (O): \_\_\_\_\_
- Inside Width of Frame (Measure between the tabs or Plates on the sides on the very bottom of the chute) (IW): \_\_\_\_\_



- Front of Frame up to the Start of the Pillow Block (OL): \_\_\_\_\_
- Which way do Chutes Open:

Both to Middle   Both to Front of Trailer   Both to Outside   Both to Rear of Trailer

- Number of Axles: \_\_\_\_\_
- Number of Hoppers: \_\_\_\_\_
- Number of Hoppers between axles and tractor unit: \_\_\_\_\_

**Note: 10" Hopper Augers are only available on Prestige Lode King or trailers older than 1998. (Lode King)**

**Please Circle Options**

**Manual Flow Controls** or **3 Button Wireless Remote** or **T200 Multi-Function Wireless Remote** (Can control future functions like Tarp, Chute Openers, lights or swing auger mover with same remote)

**8" or 10"**

**Steel Shell or Aluminium Shell**

For any questions on this order form please contact Michel's Industries.

NOTE: Michel's is not responsible for any incorrect measurements

**Michel's Industries LTD**

P.O. Box 119

St. Gregor, SK S0K 3X0

PH. # (306)366-2184 Fax# (306)366-2145