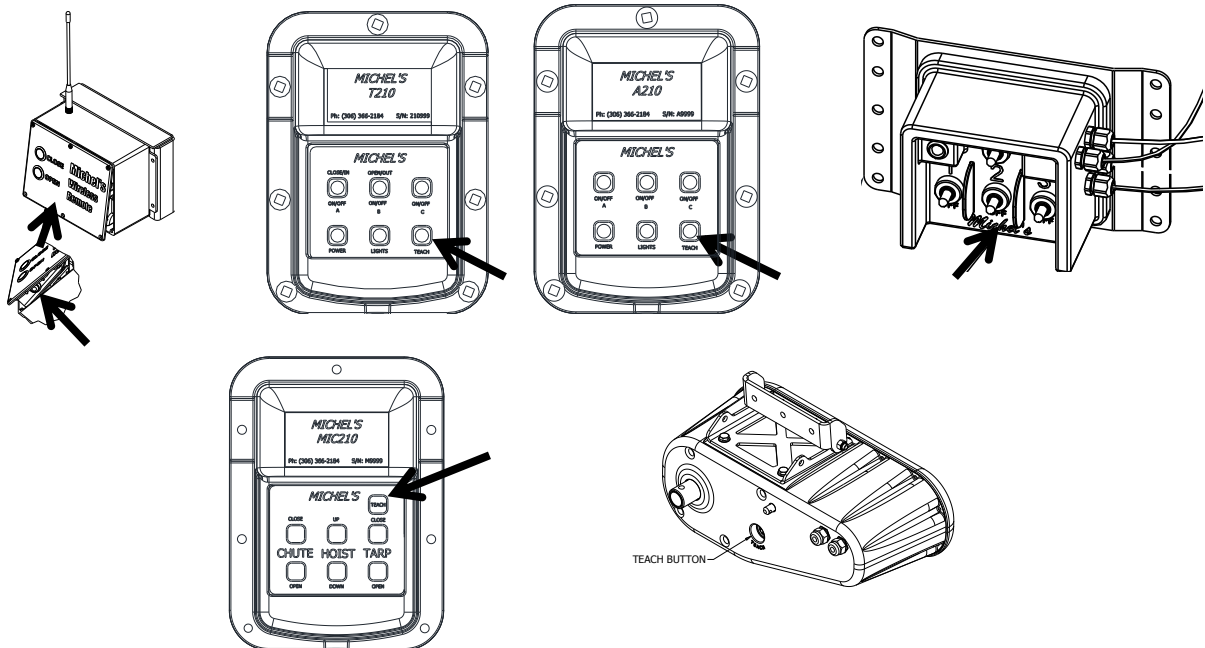


QUICK GUIDE TO PAIRING AND SETTING THE LIMITS

This guide is only a quick reference. For further details on the operation and installation of your Michel's Industries Integrated Wireless Technology product see the R200 Remote Manual and the Installation Manual for the appropriate product. These manuals can be found on our website www.michels.ca if you do not have one.

If the unit is being re-installed after having service work performed, it will be required to re-teach the unit to the remote and for the EZ Opener it will be required to reset the limits. If this is the case then the first step would be to remove the screen that used to operate the unit. Do this by entering into the non-functioning screen and select "EDIT UNIT". Then once inside of the "EDIT UNIT" screen highlight the "REMOVE UNIT" line. This will erase the old screen from the remote and allow the unit to be placed in the same unit number it had before sending it in for servicing (eg. CHUTE 1, CHUTE 2, etc).

To teach a unit to the R200 Remote first locate the teach button.



The above images illustrate where to find the teach button on a variety of Michel's Industries products. Note: On the A200 auger box (top right) the teach button is located directly on the circuit board and the A200 control box will have to come off of the trailer and have the back cover removed. The teach button is the red button on the circuit board.

In order to teach any unit to the remote, press and hold that unit's teach button for approximately 10 seconds. The red LED above the teach button on the 210 units will illuminate once that unit is in its teach mode. Continue holding the teach button – do not let go. On the remote, go to the Setup menu. Once inside the Setup 1 menu verify that the "ADD UNIT" line is highlighted. If it is press enter. If the unit successfully paired with the remote a line will appear above the "ADD UNIT" line saying that the unit has been added. Let go of the teach button. The unit's screen should now appear on the remote when it is selected and should be operational.

Setting the Limits of the Chute Opener:

Anytime an EZ Opener has been removed from a trailer it will be required to reset the limits. After it has been re-installed and paired again with the remote, use the following instructions to reset the limits on the EZ Opener.

VERY IMPORTANT: MAKE SURE THE LIMITS HAVE BEEN SET BEFORE ATTEMPTING TO OPERATE THE CHUTE OPENER! Failure to do so may result in damage to the trailer or the chute opener and will not be covered under warranty.

*****Prior to setting the limits the chute opener may run backwards (open button may close, close button may open). This will be corrected automatically AFTER the limits have been set.*** **DO NOT press the open or close buttons until AFTER the limits have been set!****

Setting the limits will automatically stop the chute opener when it reaches the fully open or closed position.

Start the procedure with the chute half way open.

To set the limits of the Chute, scroll down to 'Edit Unit' and press 'Enter'.

After entering the Chute Edit Menu, 'Set Limits' should already be highlighted. Press 'Enter'

The screen changes to the 'Set Limits' screen. The first limit you set is the closed limit which will already be highlighted.

'Set Close Limit' will already be highlighted and will be the first limit to be set. Use the 'DIR1' and 'DIR2' buttons on the remote to move the chute so it is fully closed. Leave about 1/16" before the gate is in contact with the trailer. If it is contacting the trailer the chute opener could be adding unwanted stress to the trailer and itself because it is bottoming out. It is important that the chute be traveling in the closed direction when you stop. If it has to be opened to get the proper clearance move the chute open at least a 1" and then close again. This will ensure that the backlash of the chute gate has been used up.

With the chute positioned fully closed, press 'Enter'.

Next the 'Set Open Limit' will be highlighted. Use the 'DIR1' and 'DIR2' buttons to move the chute so it is fully open. Typically the chute gate will go past the opening of the trailer by few inches before bottoming out. Move the chute so it is fully open and approximately a 1/2" before it bottoms out on the stops.

With the chute positioned at fully open, press 'Enter'.

'Save Limits' is now highlighted. Press 'Enter' and the limits will be saved. It will exit to the 'Edit Unit' screen.

To exit to the chute screen, use the up and down arrows to select 'Exit' and press 'Enter'.

If you go into the 'Set Limits' by mistake or to see the sensor position, press the 'Up' arrow to exit to the 'Edit Unit' screen.

REMOVE THE WARNING TAG AND INSERT THE LYNCH PIN INTO THE LOCKING PIN AT THE BACK OF THE CHUTE OPENER AFTER THE LIMITS HAVE BEEN SET.