



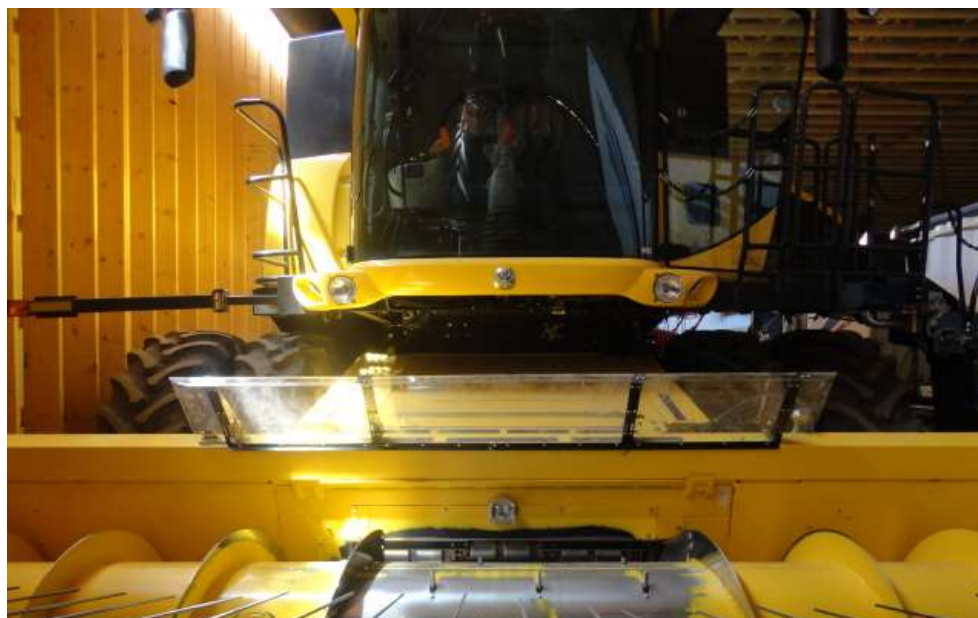
Michel's

CROP CATCHER II

Patent Pending

St. Gregor, SK Canada S0K 3X0 (306) 366-2184

INSTRUCTION MANUAL



Approximate time to complete installation is 1-1/2" hours for two people

Recommended tools required for installing the Crop Catcher:

-9/16" socket
-Hammer

-7/16" socket
-Center Punch

-Ratchet
-11/32" Drill Bit

-Extension
-3/8" Drill

-#2 Phillips Screw Driver
-Large Flat Screw Driver

Michel's Industries, Ltd.

P.O. Box 119
St. Gregor, Saskatchewan
S0K 3X0 Canada

Ph#(306)366-2184 or Fax#(306)366-2145

Unpack and check that all of the parts are with your Crop Catcher:

Item	QTY	Part No.	Description
1	1	0011-000501L	Polycarbonate sheet (1/8) 2 Bend End Panel
2	1	0011-000502	Polycarbonate sheet (1/8) 2 Bend Middle Panel
3	1	0011-000501R	Polycarbonate sheet (1/8) 2 Bend End Panel
4	2	0011-000507R	Mounting Bracket - Right
5	2	0011-000507L	Mounting Bracket - Left
6	4	0011-000504	2 Bend Upright Glass Support
7	4	0011-000503	Inside Glass Support
8	1	0011-000506	Glass Support Bracket
9	1	0011-000505	Glass Support Bracket - Offset
10	8	0106-000016	3/8" x 1 1/4" Self-Threading Bolt
11	8	0100-001102	3/8" Nylon Hex Nut
12	8	0105-009215	3/8" x 1" Carriage Bolt
13	38	0100-001401	1/4" Flange Lock Nut
14	38	0105-009002	1/4" x 3/4" Carriage Bolt
15	8	0106-140001	10-24 x 5/16" Truss Head Phillips/Slot Machine Screw Zinc
16	8	0101-001200	1/4" Lock Washer
17	8	0106-140000	10-24 x 1/4" Binder Post Zinc

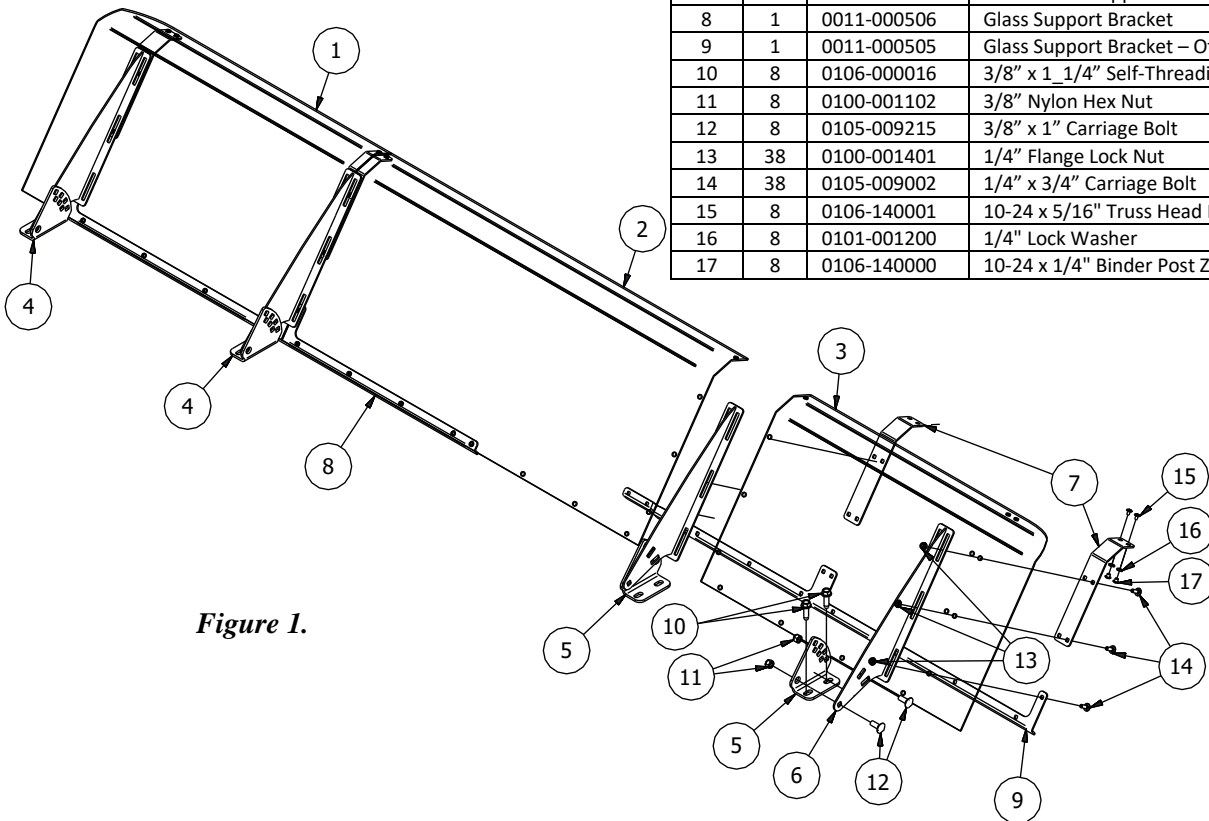


Figure 1.

Optional Extension Kit Parts

Item	QTY	Part No.	Description
1	1	0011-000502	Polycarbonate sheet (1/8) 2 Bend Middle Panel
2	1	0011-000504	2 Bend Upright Glass Support
3	1	0011-000507R	Mounting Bracket - Right
4	1	0011-000508	Extension Support Bracket
5	1	0011-000503	Inside Glass Support
6	2	0106-140001	10-24 x 5/16" Truss Head Phillips/Slot Machine Screw Zinc
7	2	0101-001200	1/4" Lock Washer
8	2	0106-140000	10-24 x 1/4" Binder Post Zinc
9	14	0105-009002	1/4" x 3/4" Carriage Bolt
10	14	0100-001401	1/4" Flange Lock Nut
11	2	0105-009215	3/8" x 1" Carriage Bolt
12	2	0100-001102	3/8" Nylon Hex Nut
13	2	0106-000016	3/8" x 1 1/4" Self-Threading Bolt

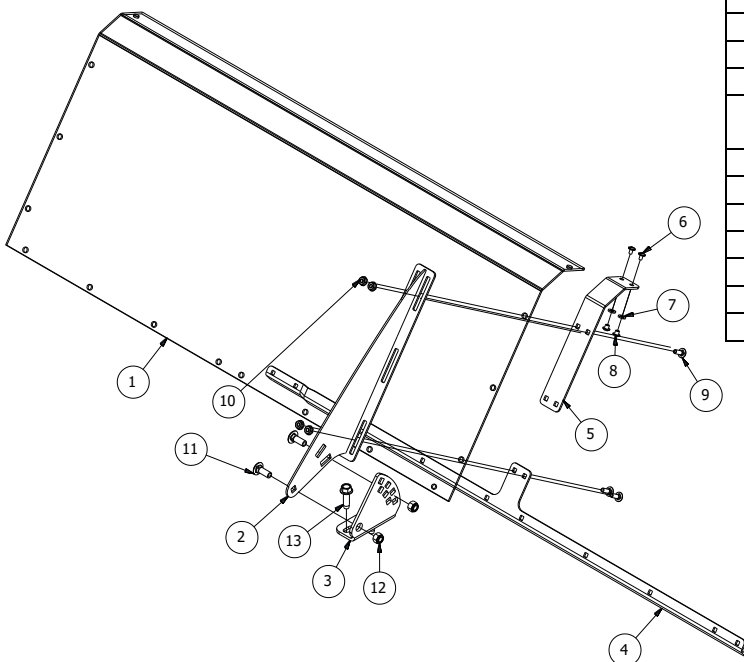
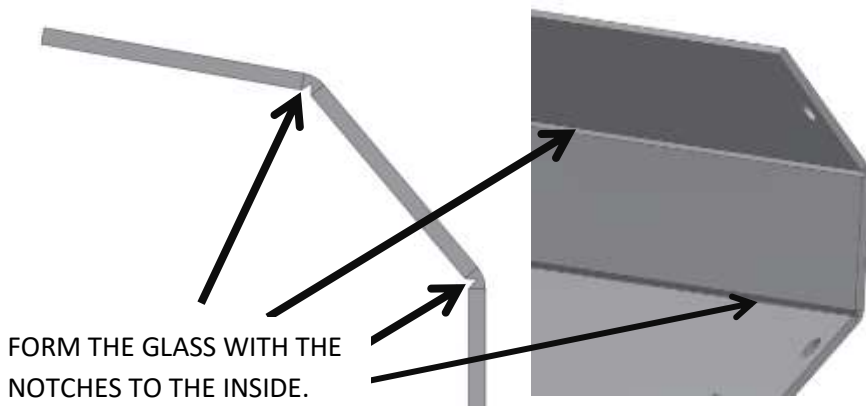


Figure 1A.

Glass Forming Procedure:

The glass that is supplied with your Crop Catcher has grooves cut into it where they need to be formed. These grooves need to be on the inside of the glass after they are formed. It is easy to form the glass with your hands. Use #7, Inside Glass Support as a guide for how much to form the glass.



STEP 1

Bolt the Upright Glass Support Brackets to the Mounting Brackets using two 3/8" carriage bolts. The Upright Brackets are mounted on the bent flange side of the Mounting Bracket and the carriage head is also on the bent flange side. Refer to the Figure 2. Clamp the bracket to a work bench with the bent flange to the outside. Remove the protective covering on the plastic and wash with soapy water. **Do not use Glass Cleaner to clean the plastic, use the optimal "Dust Away" Plastic Cleaner supplied by Michel's.** Glass cleaner will create unwanted static build up and cause dust to stick to the plastic.

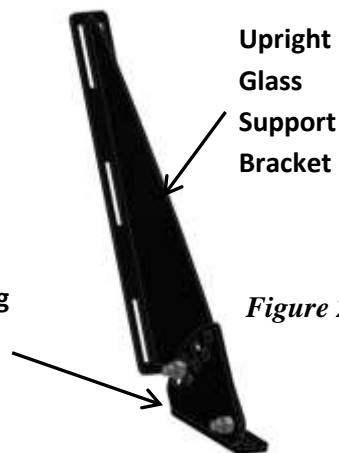


Figure 2.

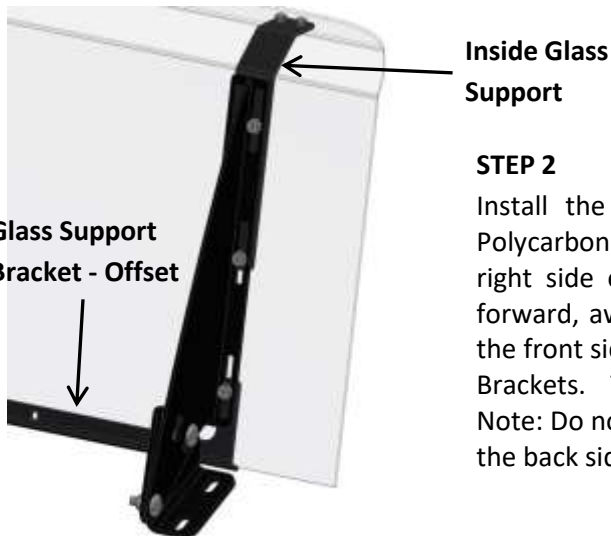


Figure 3.

STEP 2

Install the Glass Support Brackets across the bottom front of the outside Polycarbonate sheet end panels. The Glass Support Bracket - Offset will be on the right side end panel. The bent flange on the Glass Support Brackets mount forward, away from the polycarbonate sheet. Insert the 1/4" carriage bolts from the front side. Next install the Inside Glass Support and the Upright Glass Support Brackets. These brackets will splice the polycarbonate sheet panels together. Note: Do not tighten hardware until completely assembled. Nuts are installed on the back side.

Step 3

Install the polycarbonate sheet Middle Panel making sure that the Glass Support Bracket - Offset overlaps and mounts on top of the Glass Support Bracket. See Figure 4. If purchased, install the Optional Extension kit inbetween the Middle polycarbonate sheet panel and the left polycarbonate sheet panel. Refer to Figure 1A.

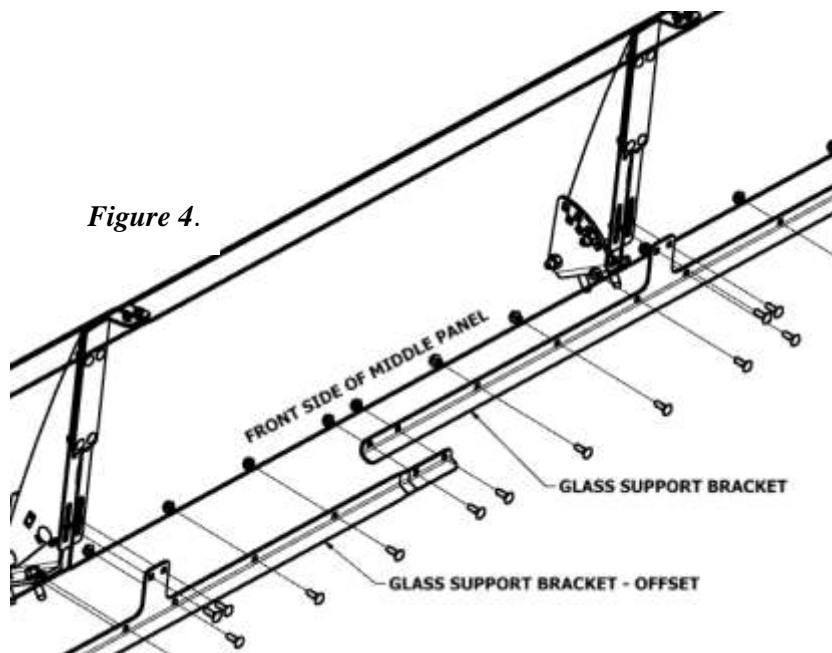
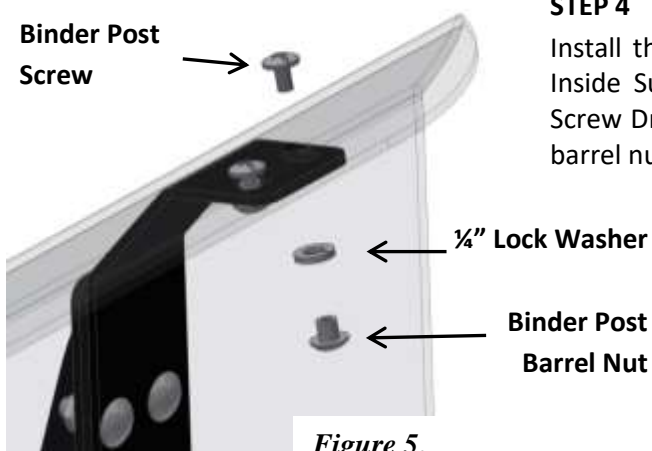


Figure 4.



STEP 4

Install the Binder posts into the top of the polycarbonate sheet and the Inside Support Bracket. Use a #2 Phillip Screw Driver and a Large Flat Screw Driver to tighten. Insert the screw from the top side and insert the barrel nut and lock washer from the bottom. Refer to Figure 5.

STEP 5

Once the Crop Catcher is all together the bottom carriage bolts can be tightened. Do not over tighten as it may cause damage to the Lexon Glass. It is easier to tighten them if the Crop Catcher is laying on it's face. Leave the Upright Support Brackets loose so the complete assembly can slide up and down.



Figure 6.

STEP 6

Center the Crop Catcher on the combine header and Install the mounting brackets flush with the front of the header tubing. Mark the mounting locations with a center punch and drill a 11/32" hole for the 3/8" self-tapping bolts. Note: If installing onto a straight cut header make sure that the hole locations do not drill into the hydraulic reservoir or lines. It is recommended to use a drill or impact when installing the 3/8" self-tapping bolts. To adjust the Crop Catcher it is recommended to have the top 1"-2" past the center line of the auger. Refer to Figure 7. This will allow maximum coverage while maintaining enough angle to help keep the dust from collecting on the back of the Crop Catcher. Once the uprights are bolted in the desired position, push the glass assembly down to have as little space as possible between the header and the Crop Catcher. The carriage head bolts on the Upright Support Brackets can now be tightened to 50in-lbs of Torque; do not exceed 70in-lbs. **DO NOT OVER TIGHTEN** as damage may occur to the glass.

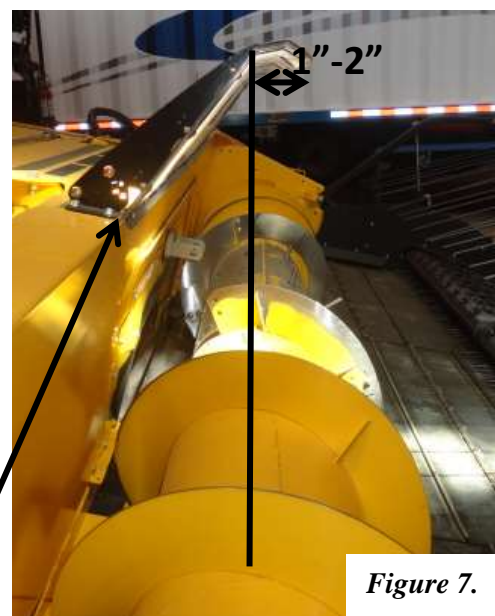


Figure 7.

To Care for your new Crop Catcher use a plastic cleaner such as the optional "Dust Away" Plastic Cleaner supplied by Michel's. Do not use Glass Cleaner.

For assistance on your Crop Catcher, please contact Michel's Industries Ltd.

Michel's Industries, Ltd.

P.O. Box 119

St. Gregor, Saskatchewan

May/19/2017
Aug/03/2017
Sep/05/2017
Aug/29/2018
July/16/ 2020

SOK 3X0 Canada
Ph#(306)366-2184 or Fax#(306)366-2145