



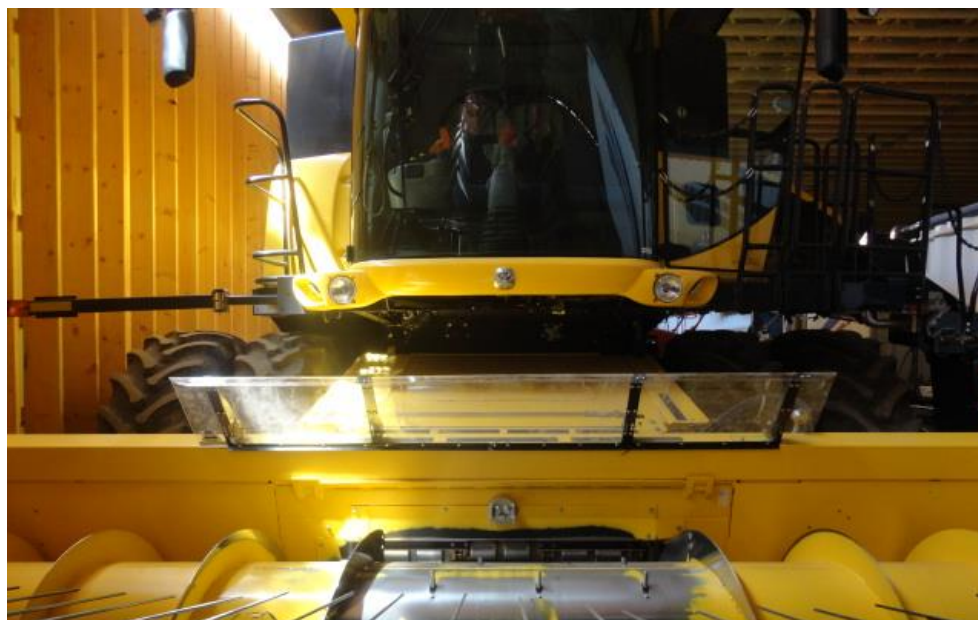
# Michel's

## CROP CATCHER II

Patent Pending

St. Gregor, SK Canada S0K 3X0 (306) 366-2184

### INSTRUCTION MANUAL



Approximate time to complete installation is 1-1/2" hours for two people

Recommended tools required for installing the Crop Catcher:

-9/16" socket  
-Hammer

-7/16" socket  
-Center Punch

-Ratchet  
-11/32" Drill Bit

-Extension  
-3/8" Drill

-#2 Phillips Screw Driver  
-Large Flat Screw Driver

**Michel's** Industries, Ltd.

P.O. Box 119

St. Gregor, Saskatchewan

S0K 3X0 Canada

Ph#(306)366-2184 or Fax#(306)366-2145

Unpack and check that all of the parts are with your Crop Catcher:

Item	QTY	Part No.	Description
1	1	0011-000501L	Lexan MR 10 (1/8) 2 Bend End Panel
2	1	0011-000502	Lexan MR 10 (1/8) 2 Bend Middle Panel
3	1	0011-000501R	Lexan MR 10 (1/8) 2 Bend End Panel
4	2	0011-000507R	Mounting Bracket - Right
5	2	0011-000507L	Mounting Bracket - Left
6	4	0011-000504	2 Bend Upright Glass Support
7	4	0011-000503	Inside Glass Support
8	1	0011-000506	Glass Support Bracket
9	1	0011-000505	Glass Support Bracket - Offset
10	8	0106-000016	3/8" x 1_1/4" Self-Threading Bolt
11	8	0100-001102	3/8" Nylon Hex Nut
12	8	0105-009215	3/8" x 1" Carriage Bolt
13	38	0100-001401	1/4" Flange Lock Nut
14	38	0105-009002	1/4" x 3/4" Carriage Bolt
15	8	0106-140001	10-24 x 5/16" Truss Head Phillips/Slot Machine Screw Zinc
16	8	0101-001200	1/4" Lock Washer
17	8	0106-140000	10-24 x 1/4" Binder Post Zinc

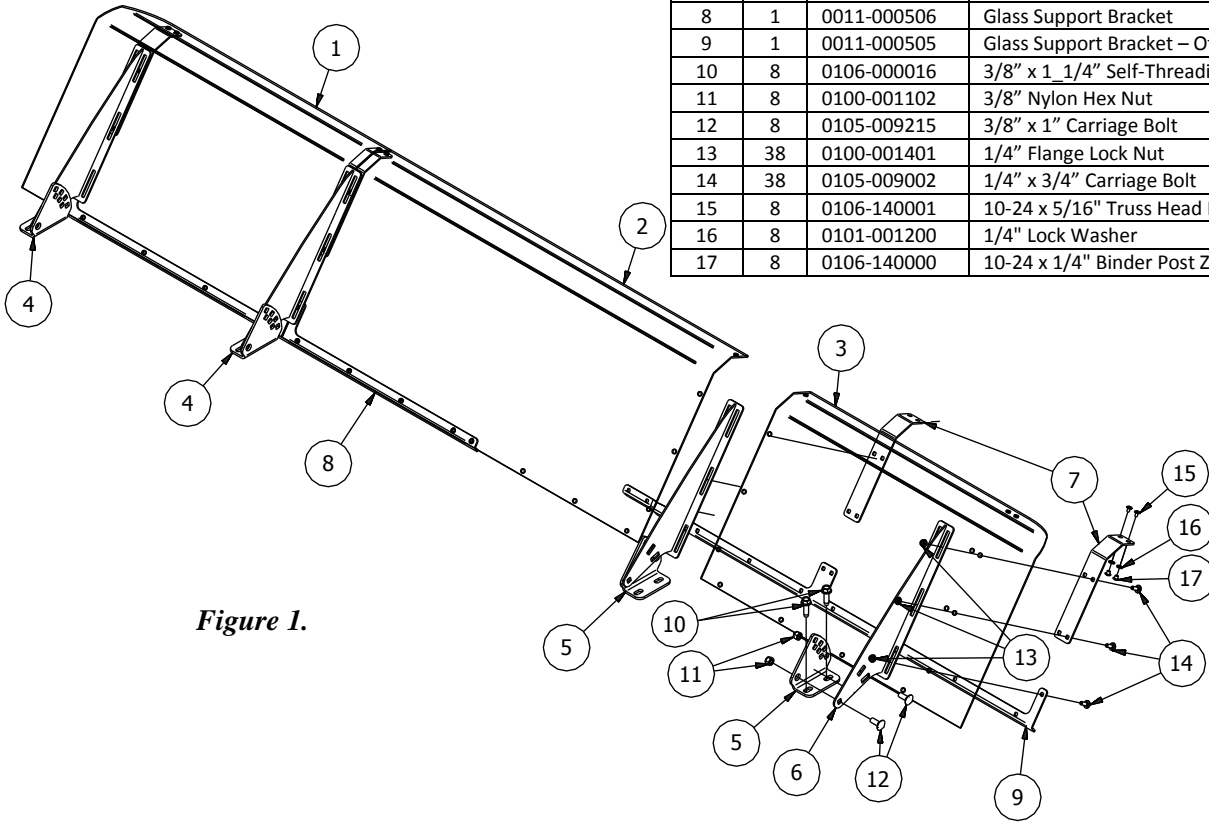


Figure 1.

**Optional Extension Kit Parts**

Item	QTY	Part No.	Description
1	1	0011-000502	Lexan MR 10 (1/8) 2 Bend Middle Panel
2	1	0011-000504	2 Bend Upright Glass Support
3	1	0011-000507R	Mounting Bracket - Right
4	1	0011-000508	Extension Support Bracket
5	1	0011-000503	Inside Glass Support
6	2	0106-140001	10-24 x 5/16" Truss Head Phillips/Slot Machine Screw Zinc
7	2	0101-001200	1/4" Lock Washer
8	2	0106-140000	10-24 x 1/4" Binder Post Zinc
9	14	0105-009002	1/4" x 3/4" Carriage Bolt
10	14	0100-001401	1/4" Flange Lock Nut
11	2	0105-009215	3/8" x 1" Carriage Bolt
12	2	0100-001102	3/8" Nylon Hex Nut
13	2	0106-000016	3/8" x 1_1/4" Self-Threading Bolt

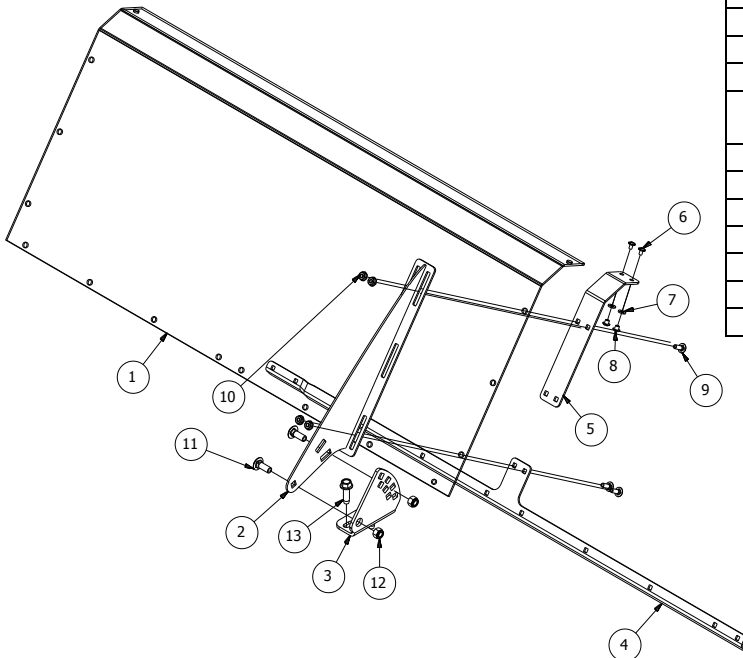
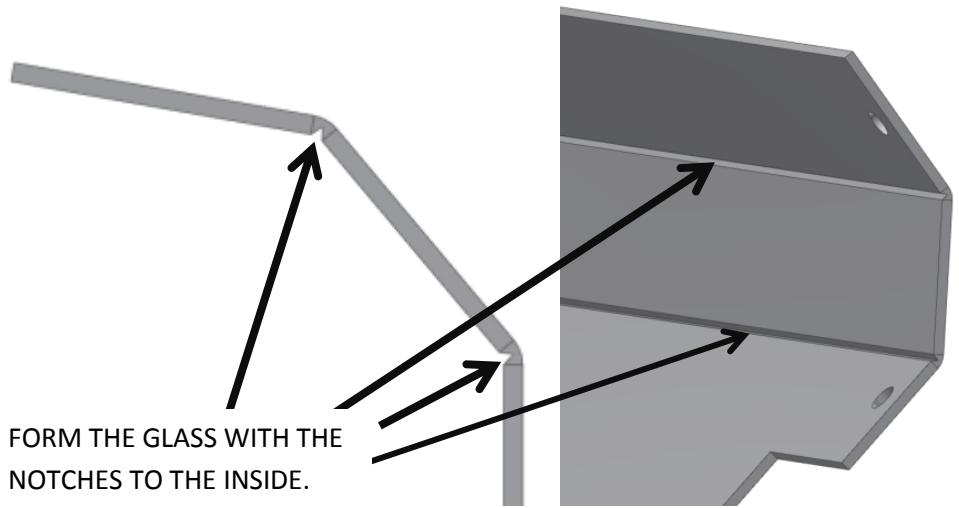


Figure 1A.

### Glass Forming Procedure:

The glass that is supplied with your Crop Catcher has grooves cut into it where they need to be formed. These grooves need to be on the inside of the glass after they are formed. It is easy to form the glass with your hands. Use #7, Inside Glass Support as a guide for how much to form the glass.



#### STEP 1

Bolt the Upright Glass Support Brackets to the Mounting Brackets using two 3/8" carriage bolts. The Upright Brackets are mounted on the flange side of the Mounting Bracket and the carriage head is also on the bent flange side. Refer to the Figure 2 exploded view. Clamp the bracket to a work bench with the bent flange to the outside. Remove the protective covering on the plastic and wash with soapy water. **Do not use Glass Cleaner to clean the plastic, use the optional "Dust Away" Plastic Cleaner supplied by Michel's.** Glass cleaner will create unwanted static build up and cause dust to stick to the plastic.

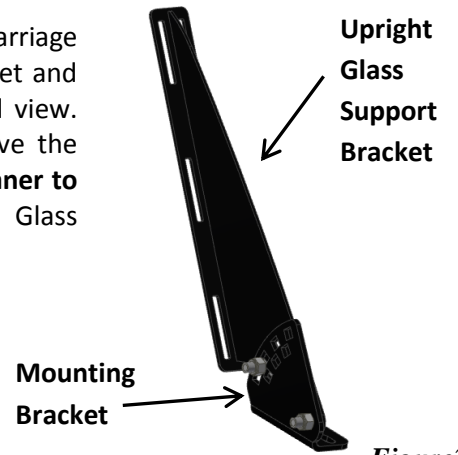


Figure 2

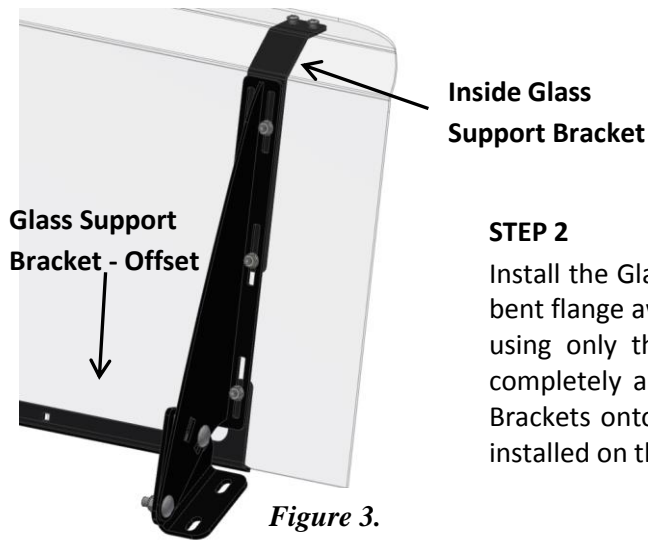


Figure 3.

#### STEP 2

Install the Glass Support Brackets onto the front side of the Lexan and with the bent flange away from the glass. Insert the 1/4" carriage bolts from the front side using only the bottom holes at this time. Do not tighten hardware until completely assembled. Next install the Lexan and the Inside Plastic Support Brackets onto two Upright Support Brackets as see in Figure 3. Note: Nuts are installed on the back side.

#### STEP 3

Install the Lexan Center Panel and the Glass Support Brackets and the third Upright Support Bracket as seen in Figure 4. Making sure that the offset brackets overlap and bolt together properly. Install the last plastic panel. If purchased install the Optional Extension kit inbetween the center plastic panel and an outside plastic panel.

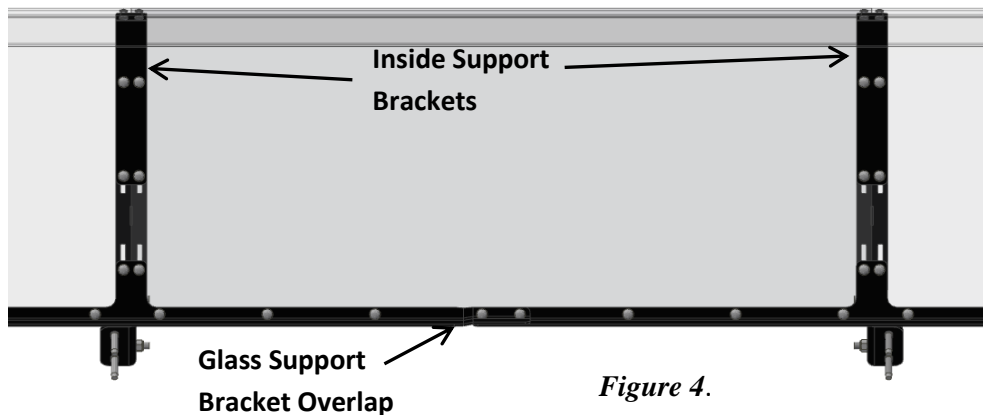
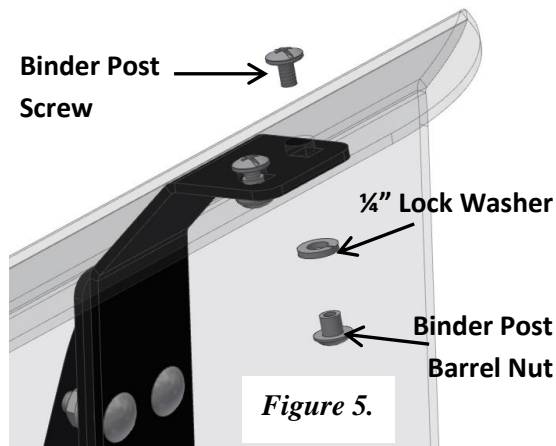


Figure 4.

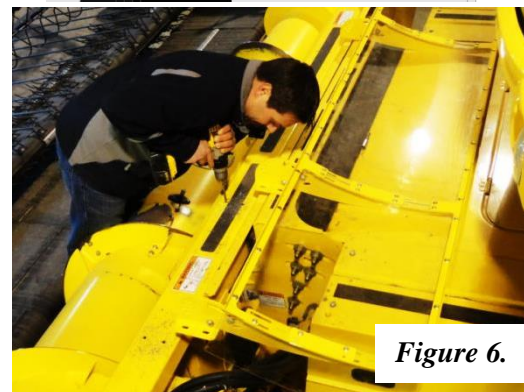
#### STEP 4

Install the Binder posts into the top of the Lexan and Inside Support Bracket. Use a #2 Phillip Screw Driver and a Large Flat Screw Driver to tighten. Insert the screw from the top side and insert the barrel nut and lock washer from the bottom. Refer to Figure 5.



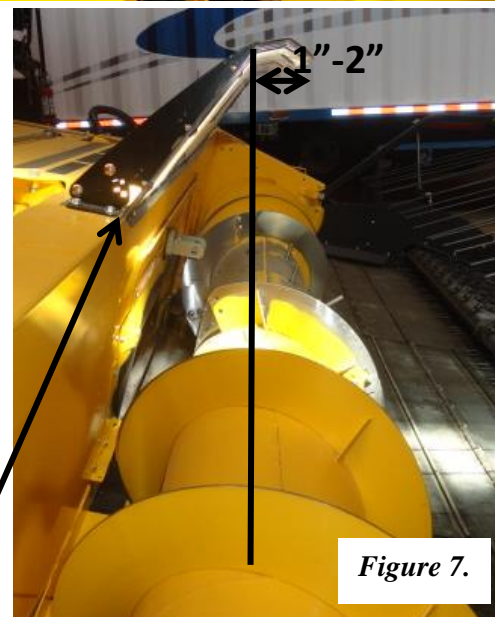
#### STEP 5

Once the Crop Catcher is all together the bottom carriage bolts can be tightened. Do not over tighten as it may cause damage to the Lexan Glass. It is easier to tighten them if the Crop Catcher is laying on it's face. Leave the Upright Support Brackets loose so the complete assembly can slide up and down.



#### STEP 6

Center the Crop Catcher on the combine header and Install the mounting brackets flush with the front of the header tubing. Mark the mounting locations with a center punch and drill a 11/32" hole for the 3/8" self-tapping bolts. Note: If installing onto a straight cut header make sure that the hole locations do not drill into the hydraulic reservoir or lines. It is recommended to use a drill or impact when installing the 3/8" self-tapping bolts. To adjust the Crop Catcher it is recommended to have the top 1"-2" past the center line of the auger. Refer to Figure 7. This will allow maximum coverage while maintaining enough angle to help keep the dust from collecting on the back of the Crop Catcher. Once the uprights are bolted in the desired position, push the glass assembly down to have as little space as possible between the header and the Crop Catcher. The carriage head bolts on the Upright Support Brackets can now be tightened to 50in-lbs of Torque; do not exceed 70in-lbs. **DO NOT OVER TIGHTEN** as damage may occur to the glass.



Small Gap

**To Care for your new Crop Catcher use a plastic cleaner such as the optimal "Dust Away" Plastic Cleaner supplied by Michel's. Do not use Glass Cleaner.**

*For assistance on your Crop Catcher, please contact Michel's Industries Ltd.*

**Michel's** Industries, Ltd.

P.O. Box 119

St. Gregor, Saskatchewan

S0K 3X0 Canada

Ph#(306)366-2184 or Fax#(306)366-2145